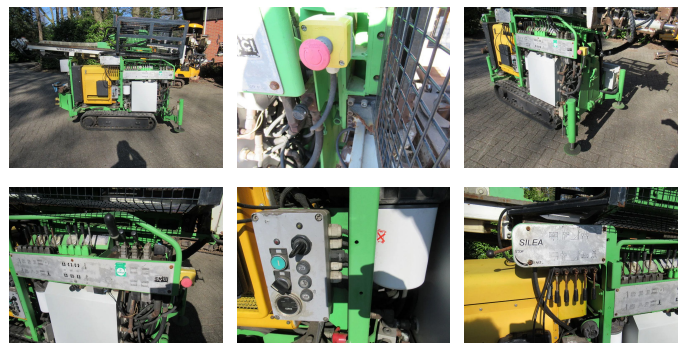


Atlas-Copco emci silea 45 c water drill

Konstruktion	Bohrmaschine
Baujahr	2011
Preis	€ 39.900,-
Kraftstoffart	Diesel
Betriebsstd.	4.048 h
Leistung	37 kW (50 PK)
Gewicht	2.650 kg
Allgemeiner zustand	Gut
Technischer zustand	Gut
Optischer zustand	Gut



Beschreibung

Type: DRILLING RIG

Brand: EMCI

Model: SILEA 45

hours on meter : 4048

Manufactured: 2011

Power: 50 HP

Dimensions: L/H/W 3.80/1.90/1.30

Crawler DRILL RIG EMCI SILEA 45

Multipurpose drill rig for :

- geotechnical jobs
- soil investigation

PARAMETERS

ENGINE: HATZ 3L41C, 50 KM at 2300 rpm

Strokes of rotary head/ feed lengt: 2300 mm

PULL DOWN FORCE: 15 kN (1.5 Tons)

PULL BACK FORCE: 25 kN (2.5 Tons)

Winch: Hydraulic line for winch

ROTARY HEAD:



- 4 gears hydraulic
- Max. torque: 430 daNm - 430 kg/m !!!
- Max. Speed: 300 Rpm
- Drifter/Percussion

DOUBLE CLAMPS:

Max. open diameter: 170 mm

TRIPLEX PUMP BERTHOUD for core drilling

Out put flow: 80 l/min

Pressure max: 40 bar

STORAGE:

For drill rods and casing pipes

Rubber tracks

Remont control for driving IMET

Weight: 2650 kg

T.: [+31 \(0\)6 53 32 46 23](tel:+31653324623)

E.: info@geerdinkhandel.com

W.: <https://www.geerdinkhandel.com>

Piepersveldweg 22

7626 LN, Borne

Netherlands